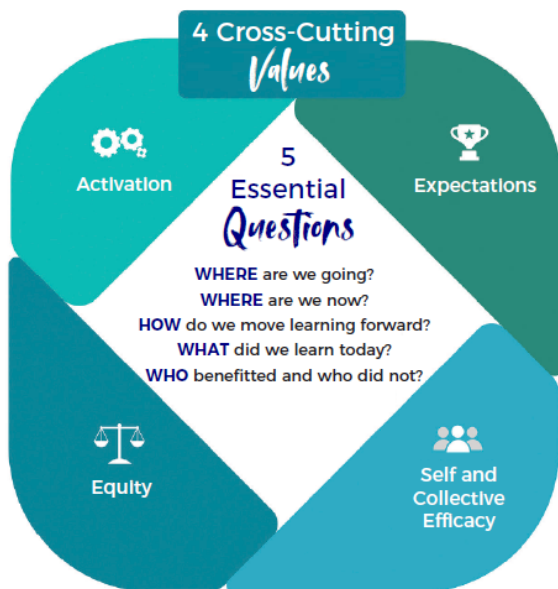


This practical and evidence-based course provides a comprehensive method of engaging educators in cycles of learning through inquiry and supports:

- Data interpretation, checking for bias, planning and implementation in support of student learning
- Enhancing teacher agency over their learning
- Cycles of assessment, reflection, and decisions that lead to greater impact
- Monitoring collaborative impact on teacher and student learning.

This professional learning is based on Five Essential Questions and Four Key Values



## Who for?

Designed for leadership teams, instructional leaders and/or with the whole staff. One school or a network of schools.

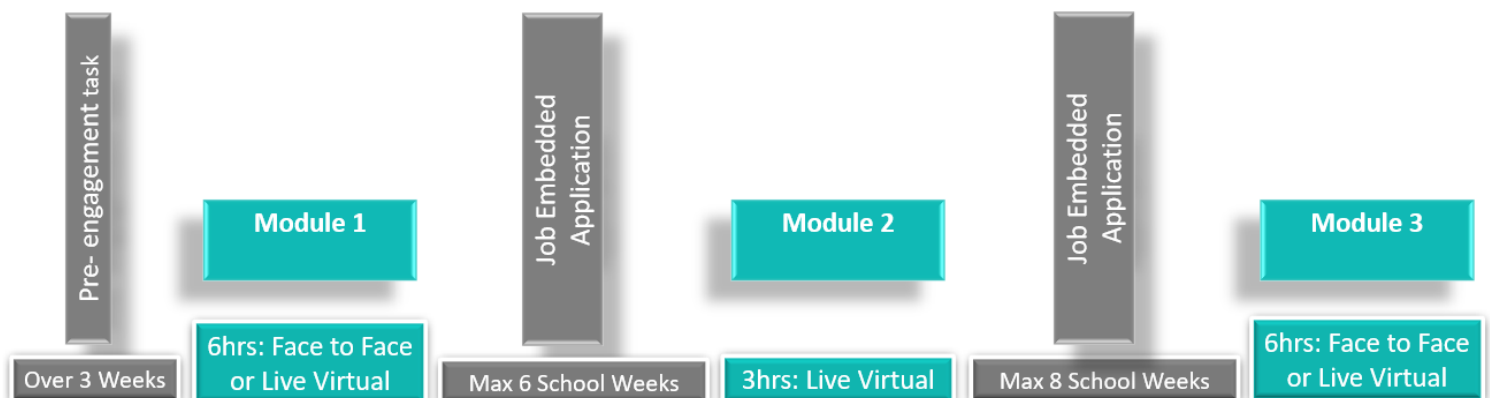
## When?

Preferred dates for the course can be negotiated within the allocated times between modules (see structure outline).

## Cost?

To be confirmed based on participant numbers.

**Structure:** One-year to multi year options. [Click here](#) for multi-year option.



@CorwinAU (Click on icons to follow)



**WANT TO GET STARTED?**

